



**Options**

- A. Product wetted seals: FPM (acc. to FDA and USP Class VI), Q and PFA
- B. ThinkTop® for control and indication.\*
- C. Indication unit with micro switches.\*
- D. Indication unit with inductive proximity switches.\*
- E. Indication unit with Hall proximity switches.\*
- F. Explosion proof indication unit with inductive proximity switches.\*
- G. Bracket for actuator.
- H. Handle with two or four positions.
- I. Handle for electrical position indication.
- J. Handle with infinite intermediate positions.
- K. Multipositioning handle\*\*.
- L. Lockable Multiposition Handle. Padlock can be mounted as shown in fig. 3.

**Note!** Padlock is not delivered.

- M. Special cap for 90° turned handle position.
- N. Service tool for actuator.
- O. Service tool for fitting 25-38 mm (DN25 - DN40) valve discs.

\* For further information see Product Catalogue chapter "Control & Indication".

\*\* A padlock can be mounted on the Lockable Multiposition Handle as shown in the opposite figure.

**Note!** Padlock is not delivered.

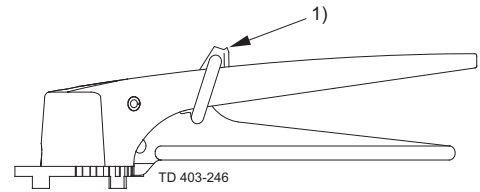


Fig. 1. Lockable Multiposition Handle with padlock.

1. Padlock

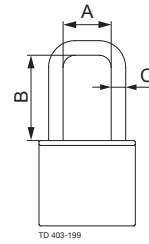


Fig.2. Dimensions - padlock.

- A. Min. 20 mm
- B. Min. 35 mm
- C.  $\varnothing$ 6 mm

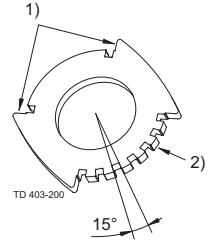


Fig. 3 Positioning cap.

- 1. On/Off
- 2. Multi positioning

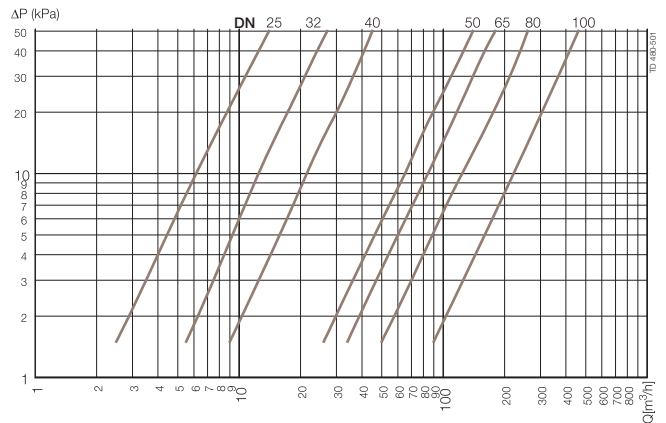
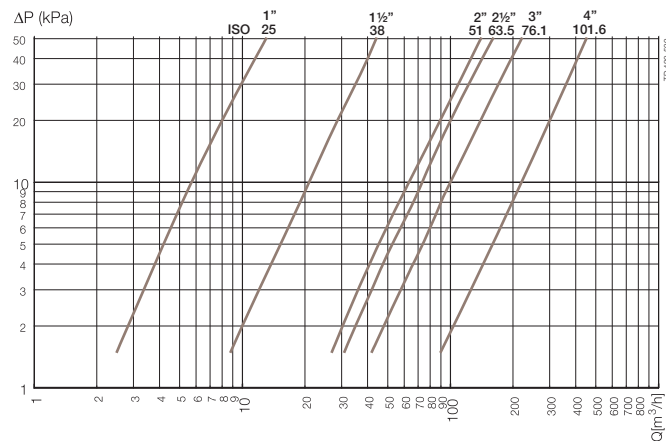
**Documentation**

All valves are delivered with Alfa Laval Q-doc.

**Note!**

For further details, see also ESE01699.

**Capacity/Pressure drop diagrams**



**NOTE!**

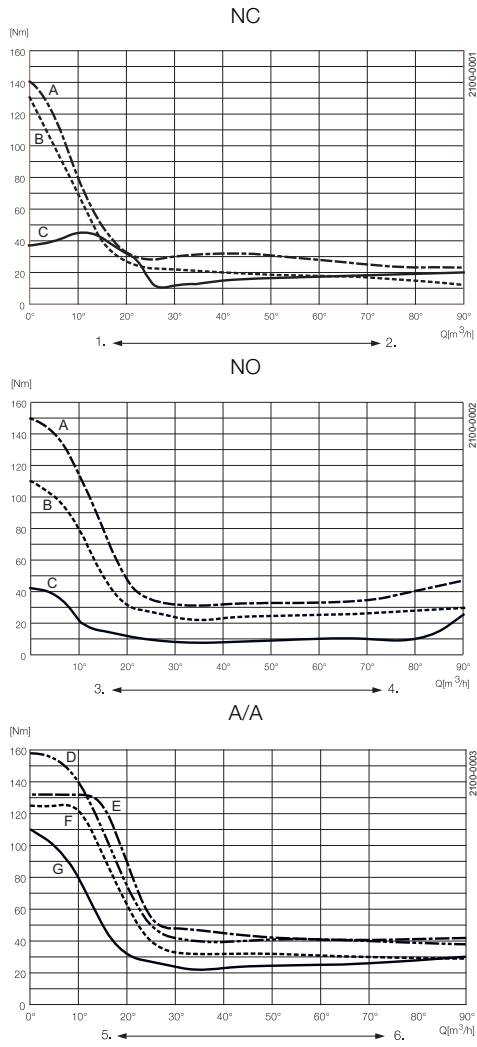
For the diagrams the following applies:

Medium: Water (20°C).

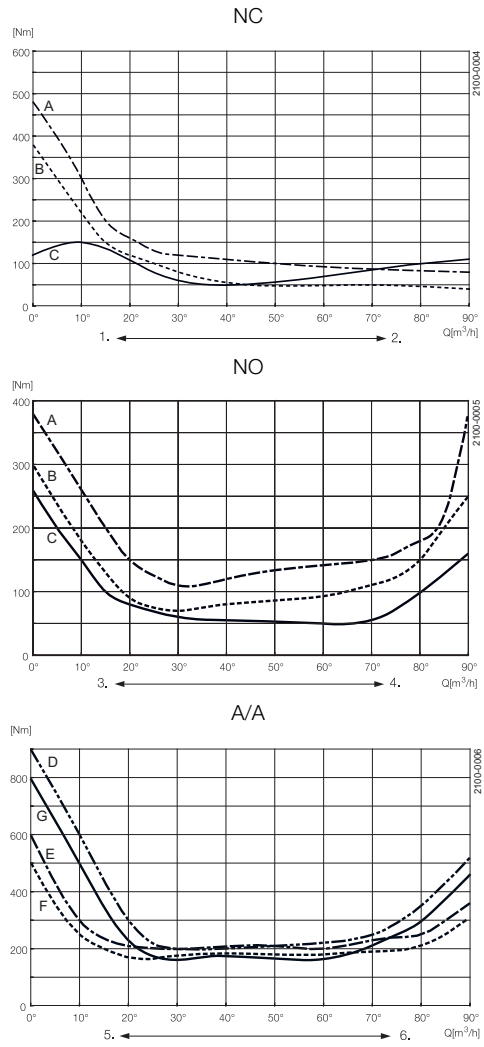
Measurement: In accordance with VDI 2173.

Torque diagrams - Actuator

LKLA ø85 mm:



LKLA ø133 mm:



- A = 6 bar air pressure
- B = 5 bar air pressure
- C = Closing/opening with spring
- D = 6 bar air pressure connection on top
- E = 6 bar air pressure connection on bottom
- F = 5 bar air pressure connection on top
- G = 5 bar air pressure connection on bottom

- Angular motion of actuator:
1. Closing - Spring activated
  2. Opening - Air activated
  3. Closing - Air activated
  4. Opening - Spring activated
  5. Closing
  6. Opening

Torque values (for rotating the valve disc in a dry seal ring)

Size		Max. Nm
25 mm	DN25	15
	DN32	15
38 mm	DN40	15
51 mm	DN50	20
63.5 mm	DN65	25
76 mm	DN80	30
101.6 mm	DN100	35

## Dimensions

Fig. 1. Dimensions - valve.

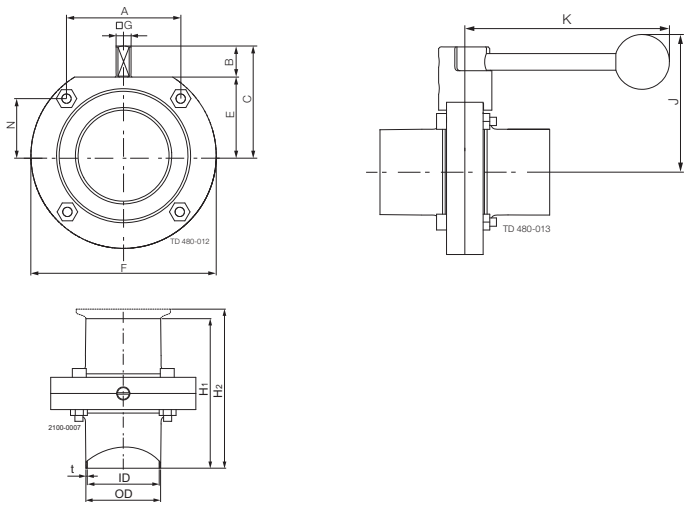
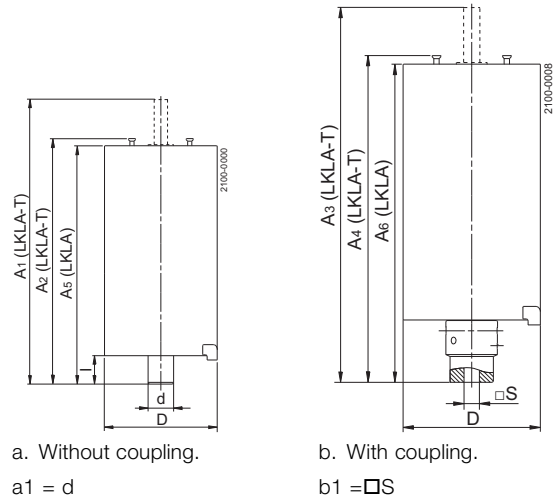


Fig. 2. Dimensions - actuator.



## Dimensions (mm)

### LKB UltraPure

Size	25 mm	38 mm	51 mm	63.5 mm	76.1 mm	101.6 mm	DN 25	DN 32	DN 40	DN 50	DN 65	DN 80	DN 100
A	42.00	42.00	61.00	61.00	79.50	106.00	42.00	42.00	42.00	61.00	61.00	79.00	106.00
B	15.50	16.70	16.60	17.50	16.60	16.00	14.70	15.90	16.70	16.60	17.50	16.00	160.00
C	49.00	49.00	58.50	69.50	73.50	93.00	48.00	49.00	54.00	63.00	75.00	79.00	93.00
OD	25.00	38.00	51.00	63.50	76.10	101.60	29.00	35.00	41.00	53.00	70.00	85.00	104.00
ID	22.60	35.60	48.60	60.30	72.90	97.60	26.00	32.00	38.00	50.00	66.00	81.00	100.00
t	1.20	1.20	1.20	1.60	1.60	2.00	1.50	1.50	1.50	1.50	2.00	2.00	2.00
E	32.50	32.50	42.00	52.00	57.00	77.00	33.30	33.30	37.70	46.60	57.30	63.00	77.00
F	78.00	78.00	99.00	117.00	132.00	169.00	79.00	79.00	86.50	105.70	125.00	143.00	169.00
□ G	8	8	8	8	10	12	8	8	8	8	10	10	12
H1	127.00	127.00	132.00	134.00	162.00	180.00	127.00	127.00	127.00	132.00	142.00	164.00	180.00
H2	104.20	104.20	109.20	111.20	176.40	194.40	90.00	90.00	90.00	95.00	118.00	120.00	136.00
J	82.00	82.00	92.00	102.00	107.00	127.00	74.00	74.00	78.00	88.00	98.00	104.00	118.00
K	120.00	120.00	120.00	120.00	162.00	162.00	120.00	120.00	120.00	120.00	162.00	162.00	162.00
N	26.50	26.50	30.50	40.50	43.50	53.00	27.30	27.30	31.70	35.10	45.80	49.50	53.00
Weight (kg)	1.2	1.0	1.5	2.1	3.0	4.7	1.2	1.1	1.3	1.8	3.1	3.5	5.1

NOTE! Weights are for valves with welding ends and handles.

## Dimensions (mm) - Actuator

### LKLA and LKLA-T:

Valve size	25-63.5 mm DN25-50	76.1 mm DN65-80	101.6 mm DN100	101.6 mm DN100
A <sub>1</sub>	244	242	242	363
A <sub>2</sub>	193	191	191	316
A <sub>3</sub>	244	244	244	337
A <sub>4</sub>	173	173	173	290
A <sub>5</sub>	185	183	183	308
A <sub>6</sub>	165	165	165	282
D	85	85	85	133
d	17	17	17	30
l	16.5	16.5	16.5	34
□ s	8	10	12	12
Function	NC, NO, A/A	NC, NO, A/A	NC, NO, A/A	NC, NO, A/A

900593

## Connections

### Compressed air

R<sup>1</sup>/<sub>8</sub>" (BSP), internal thread.





Alfa Laval reserves the right to change specifications without prior notification. ALFA LAVAL is a trademark registered and owned by Alfa Laval Corporate AB.

ESE01697EN 1201

© Alfa Laval

---

**How to contact Alfa Laval**

Contact details for all countries are continually updated on our website. Please visit [www.alfalaval.com](http://www.alfalaval.com) to access the information direct.